

# CASE STUDY

## \$58M incremental revenue potential identified through increased daily tonnage and precious metal yields



Our client, one of the largest silver producers in Mexico, experienced a downward trend in daily tonnage of extracted ore, resulting in an unfavorable impact on profitability.

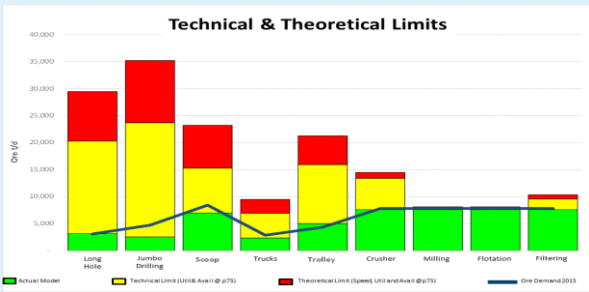
### Performance Objective

- Increase the tonnage extracted from 7,500 tons to 8,500 tons with a lower dilution, and increase the recovery at the plant

## APPROACH

1. The Program Design Phase is defined in order to find the process constraints that prevent reaching the tonnage targets of processed ore.
2. The workstreams for the Program Design Phase were defined as:
 

Mine Operations	Engineering	Labor Culture
Processing Plant	Planning	Behaviors
Maintenance	Supply Chain	Organization Structure
3. At the end of the Program Design Phase, all areas of opportunity that prevented reaching the ore tonnage targets were identified and a work plan was delivered to eliminate all those barriers.



## RESULTS

# 13% ↑

Tonnage processed increased from 7,500 to 8,500 tons

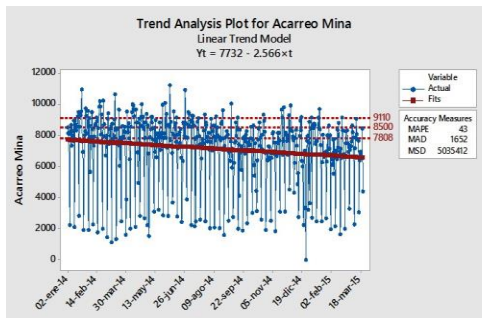
# 14% ↓

Dilution reduced from 34% to 20%

# \$58M ↑

Annual Revenue increase from additional daily precious metal yields

**Implementation Engineers (IE) identified 45 projects and provided a detailed implementation plan to achieve over 13% improvement in daily processed tonnage. Additionally, IE mining specialists identified additional opportunities to reduce dilution and increase recovery.**



\$58M incremental revenue potential identified through increased daily tonnage and precious metal yields

